

## GLOBAL SCIENCE BOOKS: MANUSCRIPT STYLE GUIDELINES



Below are samples of text, references, sections, tables, graphs and sequences that serve for ALL journals.

### Journal

**Thiébeauld O, Pooggin MM, Ryabova LA** (2007) Alternative translation strategies in plant viruses. *Plant Viruses* **1**, 1-20

### e-Journal

**Flachowsky H, Riedel M, Reim S, Hanke M-V** (2008) Evaluation of the uniformity and stability of T-DNA integration and gene expression in transgenic apple plants. *Electronic Journal of Biotechnology* **11 (1)**, pp 1-13

### Book

**Teixeira da Silva JA** (2006) *Floriculture, Ornamental and Plant Biotechnology: Advances and Topical Issues* (1<sup>st</sup> Edn, Vols I-IV), Global Science Books, Isleworth, UK, 2481 pp

### e-Book

**Teixeira da Silva JA** (2006) *Floriculture, Ornamental and Plant Biotechnology: Advances and Topical Issues* (1<sup>st</sup> Edn, Vols I-IV), Global Science Books, Isleworth, UK, 2481 pp. Available online: <http://www.globalsciencebooks.com>

### Chapter in edited book

**Chen J-J, Henny RJ** (2008) Role of micropropagation in the development of the foliage plant industry. In: Teixeira da Silva JA (Ed) *Floriculture, Ornamental and Plant Biotechnology: Advances and Topical Issues* (1<sup>st</sup> Edn, Vol V), Global Science Books, Isleworth, UK, pp 206-218

### Conference, symposium or proceedings

**Norikane A, Tanaka M, Teixeira da Silva JA** (2007) *Cymbidium* micropropagation: Multiple regeneration pathways for orchids of excellence. In: *3<sup>rd</sup> International Symposium on Acclimatization and Establishment of Micropropagated Plants*, 12-15 September, 2007, Faro, Portugal, p 64 (Abstract)

### Theses

**Silvera KI** (2002) Adaptive radiation of oil-rewarding compounds among Neotropical orchid species (Oncidiinae). MSc Thesis, University of Florida, 60 pp

### Web-pages/URLs

**Economic Research Service** (2006) Floriculture Briefing Room. United States Department of Agriculture. Available online: <http://www.ers.usda.gov/Briefing/floriculture/>

**USDA-ARS National Genetic Resources Program** (2007) Germplasm Resources Information Network (GRIN). Online database. National Germplasm Resources Laboratory, Beltsville, MD, USA. Available online: <http://www.ars-grin.gov/>

**APHIS** (2005) Addressing the risks associated with the importation of plants for planting: A white paper. United States Department of Agriculture. Available online: <http://www.aphis.usda.gov/ppq/Q37/whitepaper.pdf>

### Booklets, Reports, Small publications

**Canton BP** (2005) Availability in Florida nurseries of invasive plants on a voluntary “do not sell” list. United States Department of Agriculture, Animal and Plant Health Inspection Services, Raleigh, USA, 9 pp

### Examples in the text

Mechanisms that underlie tolerance to external oxygen deprivation have been reviewed (Kennedy *et al.* 1992; Perata and Alpi 1993; Ricard *et al.* 1994; Crawford and Braendle 1996; Morard and Silvestre 1996). Subbaiah *et al.* (1994a, 1994b) presented evidence that an elevation of cytosolic Ca<sup>2+</sup> triggers gene activation and tolerance to O<sub>2</sub> deprivation, while another work by Subbaiah *et al.* (1998) indicates that mitochondria act as a significant Ca<sup>2+</sup> store contributing to this elevation.

**TABLES**

Observe the table style carefully. Use Word Table function (Request Table template from GSB. The title and the footer must also appear within a Table “Box”. Tables must fit into a vertical A4 page. Add space before and after ± when describing data with means.

**Table 1** Colour parameters ( $L^*$ ,  $C^*$ ,  $H^p$ ) of kiwifruit before (day 0) and after various hot water dipping treatments and storage for 8 days at 20°C.

	<b>Lightness</b>	<b>Chroma</b>	<b>Hue angle</b>
Day 0	55.88	35.56	116.89
Day 8			
Control	52.60	31.56	116.20
50°C			
1.5 min	51.62	30.91	116.43
3 min	52.93	32.56	116.16
55°C			
1.5 min	54.26	33.62	115.79
3 min	52.90	32.91	116.34
60°C			
1.5 min	52.79	30.79	115.97
3 min	53.18	33.22	116.10
LSD 5%	1.48	1.81	0.64

**Table 2** Characteristics of overlying water used for sediment toxicity tests measured at test conclusions (Day 10).

<b>Sample</b>	<b>Temp (°C) (± SEM)</b>	<b>pH</b>	<b>DO<sup>a</sup></b>	<b>Alkalinity<sup>b</sup></b>	<b>Hardness<sup>b</sup></b>	<b>Conductivity</b>
Moderately hard laboratory water	24.10 ± 1.1	7.83	7.28	30	60	355 mS
1st Wetland cell	23.74 ± 1.1	7.3	8.33	28	80	6.14 mS
2nd Wetland cell	23.86 ± 1.1	6.93	8.48	14	84	3.35 mS
4th Wetland cell	23.96 ± 1.1	7.56	8.48	46	95	2.73 mS

<sup>a</sup> Dissolved oxygen, mg L<sup>-1</sup>

<sup>b</sup> mg L<sup>-1</sup> as CaCO<sub>3</sub>

Add manuscript category here.

ORIGINAL RESEARCH PAPER

Title must be UPPER and Lower case letters, so Toxicity **NOT** TOXICITY

### Toxicity of Trypsin Inhibitor from *Phaseolus vulgaris* L. against *Pieris brassicae*

Author's names: first name family name, e.g. **John Smith** **not** Smith John. Indicate the affiliations with consecutive numbers, and indicate the corresponding author with an asterisk.

**John Smith<sup>1</sup>, William Jones<sup>2</sup>, Robert Green<sup>1\*</sup>**

The full postal address must be added.

<sup>1</sup> Department of X, Y University, Postal code, Country 1

<sup>2</sup> Department of A, Z University, Postal code, Country 2

An active e-mail address must be added. Two may be added for one author or for separate authors.

Correspondence/Corresponding author\*: E-mail: x@gmail.com

Main sections = UPPER CASE, so **ABSTRACT** **not** Abstract, etc. Do not add references in the abstract. Abstract should be maximum 250 words.

#### **ABSTRACT**

Trypsin inhibitor (TI), present in the seeds of a local yellow cultivar of French bean (*Phaseolus vulgaris* L.), which is native to the Himalayan region, was tested using....

Add 4-5 key words **NOT** already present in the title.

The whole manuscript must be Times New Roman, size 12, double-spaced throughout.

Key words: insect bioassay, legume, protease inhibitor, *Spodoptera littoralis*

Add commonly used abbreviations in a list. List them alphabetically and use the style as shown.

Abbreviations: **PI**, proteinase inhibitor; **TI**, trypsin inhibitor

#### **INTRODUCTION**

Do **NOT** indent first paragraph.

Proteins which act as strong and specific inhibitors

Referencing style: Do **not** write as Liener and Kakade, 1980

plant tissues and termed protease or proteinase inhibitors, or PIs (Liener and Kakade 1980). They are

All *et al.* must be in italics. in specificity... Serine and cysteine PIs are abundant in seeds of legumes (Guillamon *et al.* 2008) and storage tissues of plants (Reeck *et al.* 1997). The presence of proteins with the ability to inhibit her proteolytic activity in *Phaseolus vulgaris* seeds. Trypsin inhibitors (TIs) were studied in *Phaseolus vulgaris* cv. ‘Canadian Wonder’, *P. vulgaris*...

The drugs developed so far are indinavir (Crixivan<sup>®</sup>), ritonavir (Norvir<sup>®</sup>), nelfinavir (Viracept<sup>®</sup>) and saquinavir (Invirase<sup>®</sup> or Fortovase<sup>®</sup>). These drugs do not cure it (Wilson 1997; Nijhuis *et al.* 2007).

## MATERIALS AND METHODS

### Seeds of bean cultivar

The seeds of *P. vulgaris* cv. ‘Local Yellow’ were procured from the Vegetable Research Station, Kalpa, India. The larvae of *S. littoralis* and eggs of *P. brassicae* were obtained...

### Statistics

The statistical analysis involved the determination of allelic and genotypic frequencies, Chi-square ( $\chi^2$ ) test ( $2 \times 2$  contingency table) and 95% confidence interval (CI) values (Dawson and Trapp 2004).

### Ethics

Ethical guidelines of the Committee for the Handling and Maintenance for Experimental animals were followed. Experimental design and execution was approved by...

## RESULTS AND DISCUSSION

The effect of mechanical wounding on leaf TI activity is presented in **Table 1**. The larvae that were fed TI showed a significant reduction in development and survival immediately after hatching compared to control larvae (**Fig. 1**).

In the text please write **Table №** and **Fig. №** in bold.

## ACKNOWLEDGEMENTS

Acknowledge those who have assisted with experimental design or execution. Also acknowledge funding agencies, sponsors, donors, those who have provided Copyright permission of any sort, etc. Dedications may also be included here as may any possible conflicts of interest.

Genetic analyses on peach germplasm have been partially supported by the projects...

## REFERENCES

Please see the first page of this template guide.

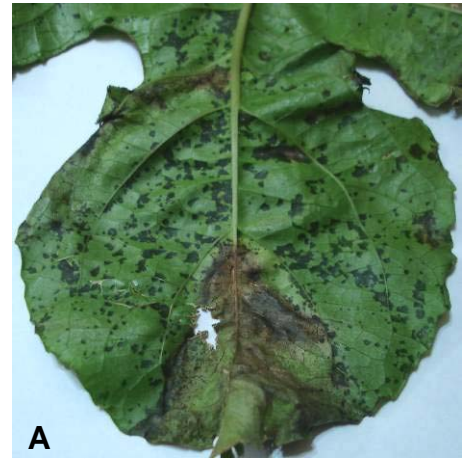
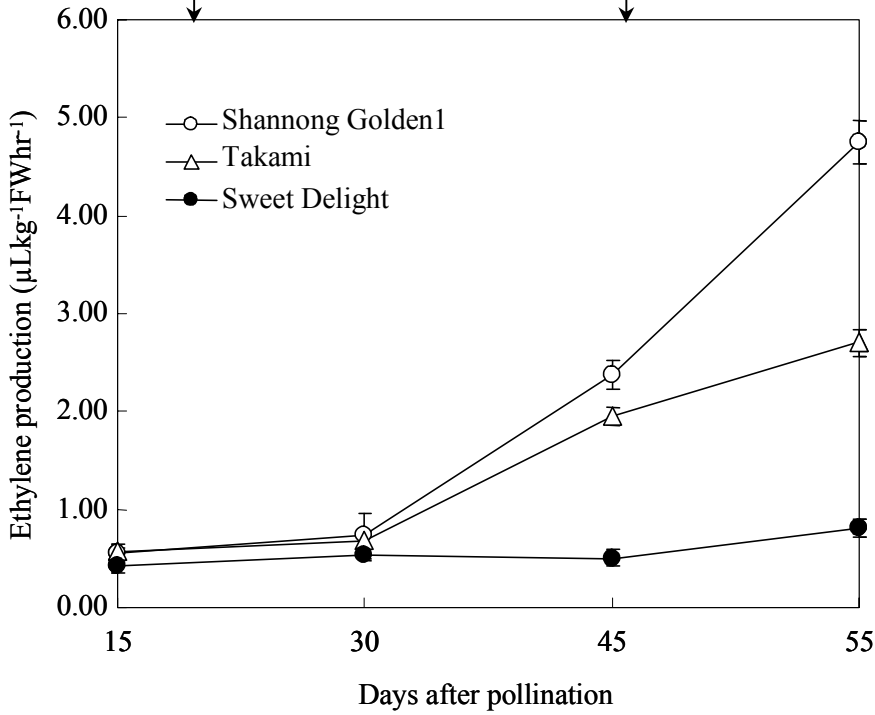
## Figure legends

Figure legends should appear after the references.  
The first, explanatory sentence of the figure legend must be in **bold**.  
Figure labels for component parts of the figure should appear as UPPER CASE, in **bold**.

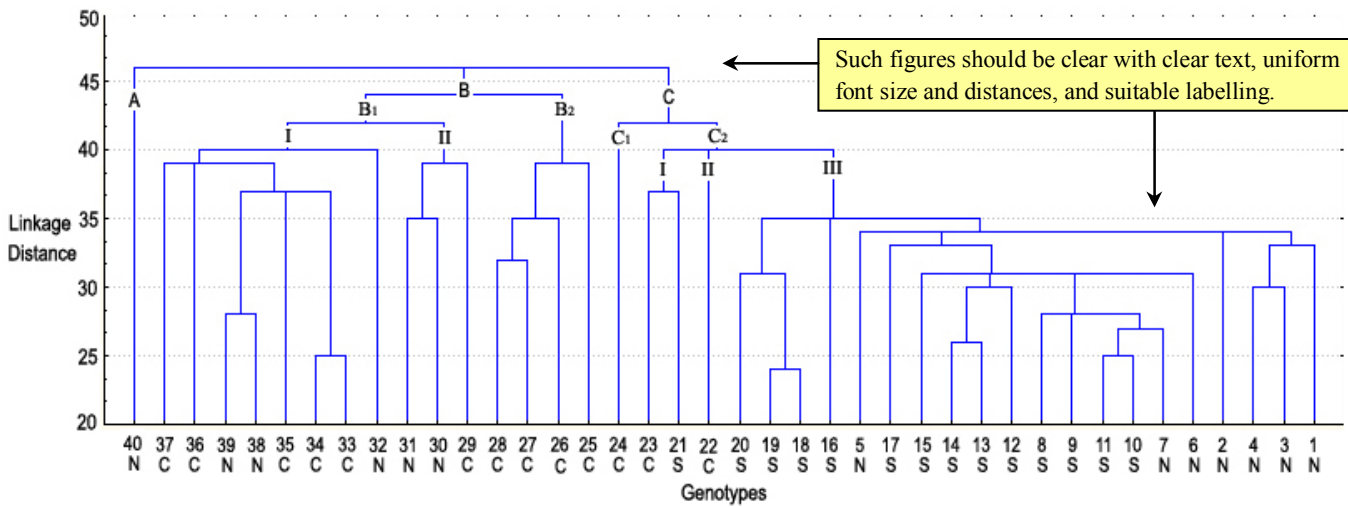
**Fig. 1 Feeding inhibition of *Pieris brassicae* larvae fed on cabbage leaf disc. (A) Larvae grown on leaf without inhibitor (control). (B) Larvae grown on leaf coated with inhibitor (treatment).**

**FIGURES**

Graphs should be clear, with errors bars where required, uniform font size and proportion, and clearly defined units.

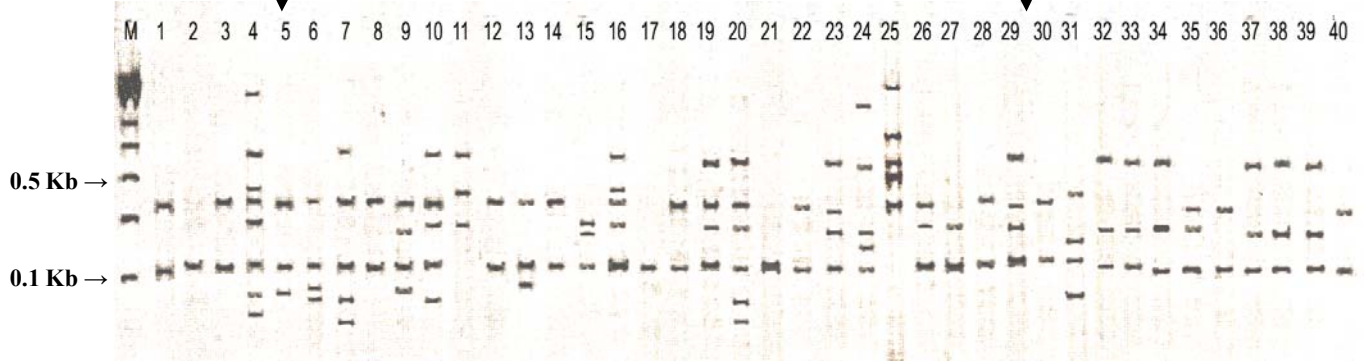


Photos should be of high resolution. These may be embedded in Word, but .jpg files of 300 or 600 dpi are preferred. Composite plates should be provided as a .jpg file (not .tiff or .bmp) AND the original Photoshop or Illustrator file should also be provided. Label with **Arial 12 bold**.



Such figures should be clear with clear text, uniform font size and distances, and suitable labelling.

Wherever possible, provide gels as dark bands on a light background rather than light bands on a dark background. Lanes, including the marker lane and band sizes should be clearly labelled.



For sequence alignments, please use Courier New size 10, shades of black, white and grey, single line spacing.  
Request Word template from GSB, if required.

G1 **CCGGG**-**TTAAT****TGAGCCA**ACTAAA-**GCTGT**GCCATGTGAGTTTGTGTTTTACACATGGC**CCCT**ACA**AGTCTA****GACA**ACTTGT**AGGTT**C-**AGCGG**TACTGT**TAA**GT**GT**OTT

CH1 **CCGGG**-**TTAAT****TGAGCCA**ACTAAA-**GCTGT**GCCATGTGAGTTTGTGTTTTACACATGGC**CCCT**GTG**AGTCTT****GACA**ACTTGC**AGGTT**C-**AGCGG**TACTGT**TAA**AT**GT**CTT

G2 **CCGGG**-**TTAAT****TGAGCCA**ACTAAA-**GCTGT**GCCATGTGAGTTTGTGTTTTACACATGGC**CCCT**ACA**AGTCTA****GACA**ACTTGT**AGGTT**C-**AGCGG**TACTGT**TAA**GT**GT**OTT

CH2 **CCGGG**-**TTAAT****TGAGCCA**ACTAAA-**GCTGT**GCCATGTGAGTTTGTGTTTTACACATGGC**CCCT**GTG**AGTCTT****GACA**ACTTGC**AGGTT**C-**AGCGG**TACTGT**TAA**AT**GT**CTT

R2 **CCGGG**-**TTAAT****TGAGCCA**ACTAAA-**GCTGT**GCCATGTGAGTTTGTGTTTTACACATGGC**CCCT**ATG**AGTCTA****GACA**ACTTGT**AGGTT**C-**AGCG**A**TACT**GT**TAA**AG**GT**OTT

S2 **CCGA**G**CTT****TAA**A**C****GAG**CC**TACC**AAAA**GCT**GT**C**T**C**T**CC**AA**TTT**AG**GG**T**AG**A**GAA**T --- **CCT**-TG**AGTCTA****GACA**ACT**CAT**C**GGT****CC****AGCGG**TACTGT**TAA**T**GGT****CTT**

G1 **TCTTCTGGTGGTGACGT****CCAGA****CAGTATGACG**A**CTT**-**TCCAATTTATCAGTAA**ATTGGA**GCCGAT**TCAGAGT**CGGT**-**GGTG**-**AAA**G**CTGTG**CTACGG**CTAGT****TCCG**

CH1 **TCTTCTGGTGGTGACGT****CCAGA****CAGTATGACG**A**CTT**-**TCCAATTTATCAGTAA**ATTGGA**GCCGAT**TCAGAGT**CGGT**-**GGTG****AAA**G**CTGTG**CTACGG**CTTGT****TCCG**

G2 **TCTTCTGGTGGTGACGT****CCAGA****CAGTATGACG**A**CTT**-**TCCAATTTATCAGTAA**ATTGGA**GCCGAT**TCAGAGT**CGGT**-**GGTG**-**AAA**G**CTGTG**CTACGG**CTAGT****TCCG**

CH2 **TCTTCTGGTGGTGACGT****CCAGA****CAGTATGACG**A**CTT**-**TCCAATTTATCAGTAA**ATTGGA**GCCGAT**TCAGAGT**CGGT**-**GGTG****AAA**G**CTGTG**CTACGG**CTTGT****TCCG**

R2 **TCTTCTGGTGGTGACGT****CCAGA****CAGTATGACG**A**CTT**-**TCCAATTTATCAGTAA**ATTGGA**GCCGAT**TCAGAGT**CGGT**-**GGTG****AAA**G**CTGTG**CTACGG**CTTGT****TCCG**

S2 **TCTTCTGGTGGTGACGT****CCAGA****CAGTATGACG****TCC****TT**-**CCTATTTTCAGAGT**GAAATAGG**GC**T**CTT****TGCAGAG****CGGT****GGTG****AAA**G**CTGTG**CTACG**ACTTGT****TCCG**